

# ADMINISTRATIVE TIDBITS

The C&MA Africa Regional Office, BP 50.600, Dakar, Senegal

VOLUME 8,  
ISSUE 2

APRIL 2009

## GREETINGS

Dear Field Offices,

Last month I had the opportunity to travel to Taylorsville, NC and visit Emanuel with Missionary Expeditors. This issue of Administrative Tidbits will feature Emanuel so you can get to know him. We all know how helpful Cindy Dunn was for us at Int. Supply Services over the years. I have no doubt that Emanuel will be equally helpful for us at Missionary Expeditors.

After a tour of their warehouse, Emanuel arranged for a tour of MDI, the company through which he has arranged for us to purchase our food orders. MDI is located just 20 minutes away from Missionary Expeditors' warehouse.

Trust the photo tour will be of interest to you. I was impressed with how both Emmanuel and Missionary Expeditors desire to help us with our shipping needs and glorify the Lord in their service to us.

Working together, *Stan*

## EMANUEL BLAJ



Emanuel and his wife, Tammy, live in Hickory, NC and have three daughters - Rebeca - 11, Sara - 7, and Lidia - 2 months. Emanuel has many years of shipping experience working for and coordinating shipments of "Christmas Child" Boxes for Samaritan's Purse.

Born in Romania, Emanuel was the son of an Opera Singer. In the late 80's, the family fled to Austria where they lived in a refugee camp for a couple years waiting to immigrate to the United States. They finally arrived in Chicago in 1991. Today, Emanuel's parents serve with the IMB in the Middle East.

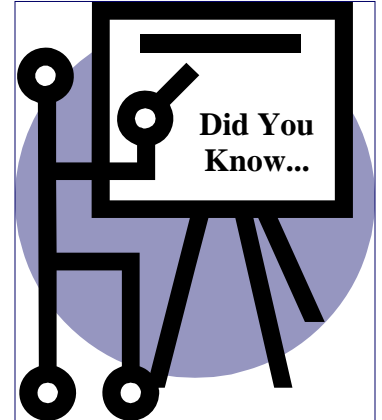
Unloading at Missionary Expeditors went very quickly. They are located less than 3 1/2 hours from Toccoa and are easy to locate.



My Dad, Clarence, accompanied me as he has many times to ISS and was also impressed with their set up.



Many thanks to Linda Ham who spent hours finding a solution to our shipping and food order needs. Thanks!



**Low Season for travel to Africa is December 25 - May 2nd.**

**This is a great time for Short Term Teams to come and save money on their transportation!**

## Gateway International Missions, Inc.

If you are driving your outfit to port, you won't find a sign on the building for Missionary Expeditors (M.E.). Gateway International Missions is allowing M.E. to use space in their warehouse for C&MA containers. Dr. Stan Frye was very welcoming and prayed for us and our ministries before we left.



## REMINDER

Please remember that zipped files are automatically deleted when sent to a csmalliance.org address for security reasons. When sending PCard receipts to Lisa, you will need to send it unzipped. Thanks!

ADMINISTRATIVE TIDBITS

## Merchants Distributors, Inc. (MDI)

The tour of the MDI warehouse was incredible. Nearly 1,000,000 square feet of storage space! Javier is Emanuel's contact and has bent over backwards to help us. Normally MDI doesn't even process orders under \$20,000! They are really doing us a favor.

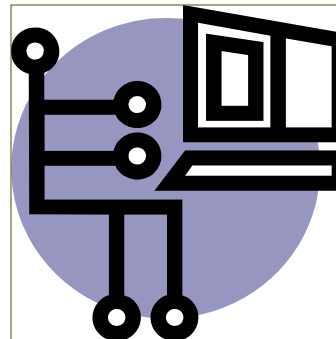


### MORE TRAVEL INFO

1. Please be sure everyone knows that all home assignment tickets are to be purchased with the field PCard. If there is a fee for using a credit card, then they should arrange payment through Linda Ham. People are not to be using personal credit cards to buy IM paid tickets.

2. Remember that the Excel Ticket Form is to be filled for all tickets being paid by IM. This form is to be approved by the field director. If the ticket is not being paid by the field director's PCard, then the Ticket Form must be sent to the N.O. travel e-mail address [IMairtravel@cmalliance.org](mailto:IMairtravel@cmalliance.org) along with field director approval. Linda Ham writes, "When the Raptim invoice arrives then accounting is able to match up both sets of paperwork and confirm we are being billed the proper price (it kind of serves as a purchase order) and also serves as back-up information when dealing with our vendors and negotiating with them." Raptim still needs an account number for the itinerary so it can be ticketed. Linda or the regional office can help you with N.O. accounts numbers.

3. Finally, National Office does not budget for or cover travel insurance for your home assignment travel. If you would like to include travel insurance, this would be a personal expense.



### Postage prices increase by 2 cents in May

Postage prices for the U.S. Postal Service will increase on May 11th. Postage for a first-class mail stamp will rise two cents to 44 cents. Forever Stamps purchased before May 11 will continue to be honored after the rate increase, with no need for additional postage for a one-ounce letter. On May 11, the price of a Forever Stamp will also jump to 44 cents. The cost for first-class mail additional ounces will remain the same at 17 cents.

### *Warning!*

Wells Fargo customers are being sent FAKE emails. These emails request information about customer accounts and services, including passwords. If you responded to an email like this, you MUST IMMEDIATELY contact Cristy Gray at N.O.. DO NOT PROVIDE any information in response to any e-mail or phone call unless you are ABSOLUTELY SURE it is from Wells Fargo. These emails are known as 'phishing' which are fake email schemes that attempt to collect secure information from you and from your computer. Report any phishing or fraudulent attempts to Report-Phish@wellsfargo.com.